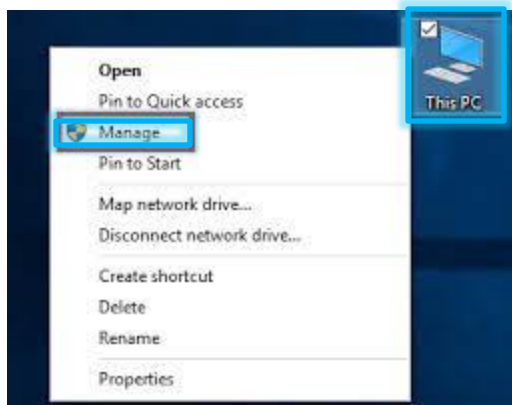
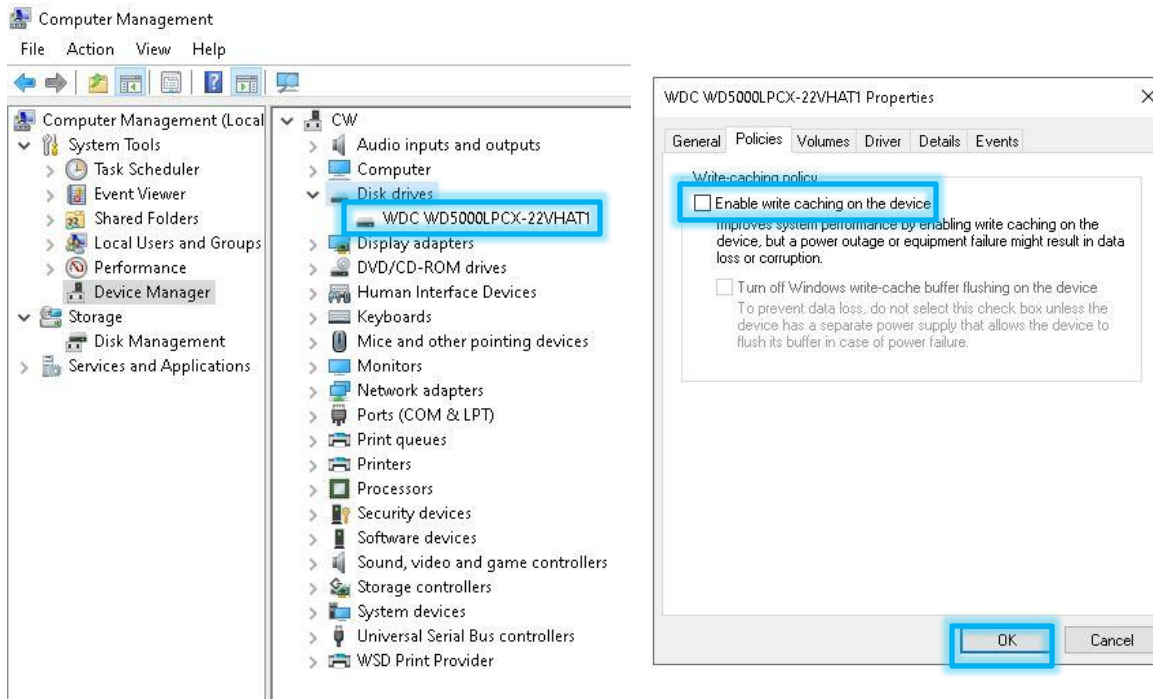


How to Configure PCs

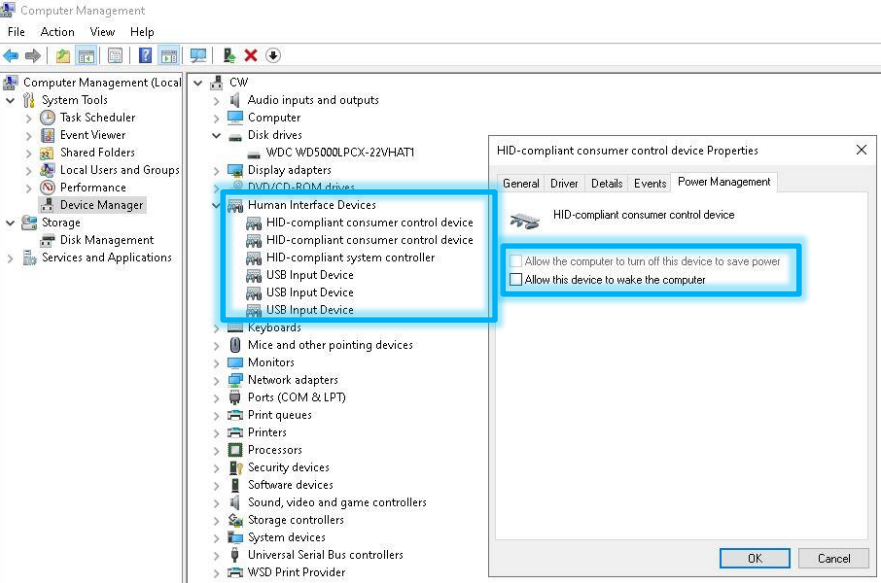
1) Right click "This PC" and choose "Manage"



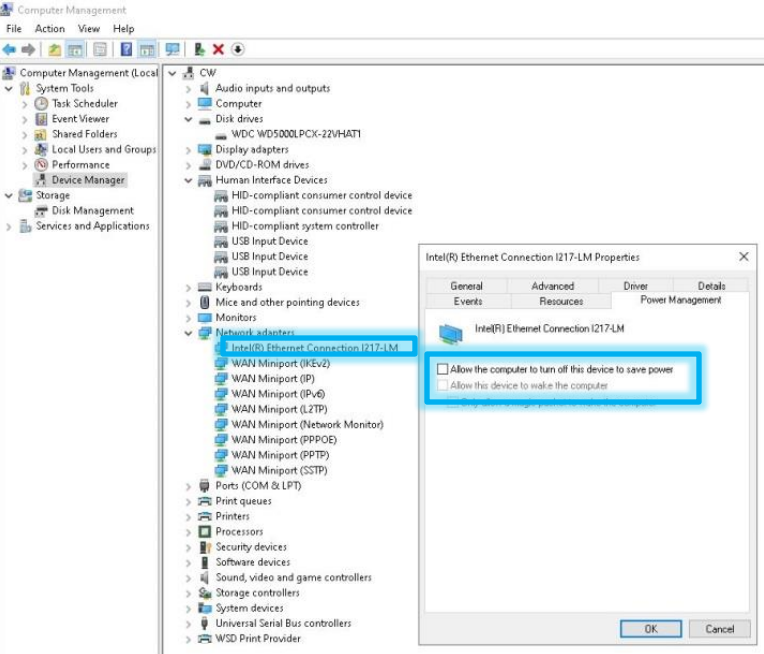
2) Select "Disk drives" > then double click the drive for options > Uncheck "Enable write caching on the device"



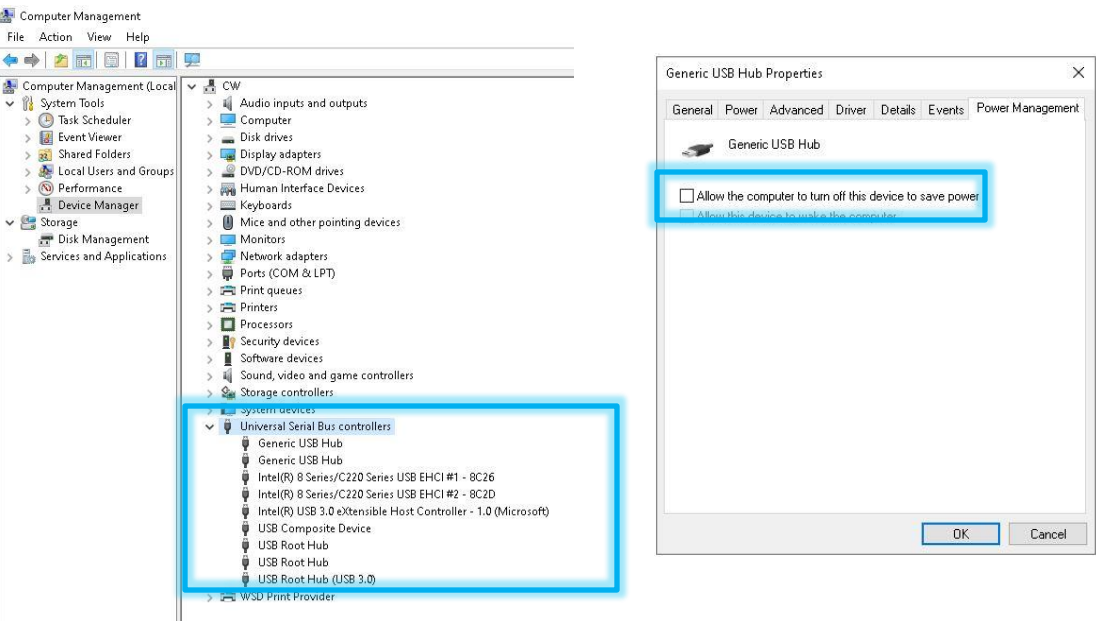
3) Select “Human Interface Devices” (right click > properties) select "Power Management" (uncheck "Allow the computer to turn off this device to save power“ on all devices listed under Human Interface Devices



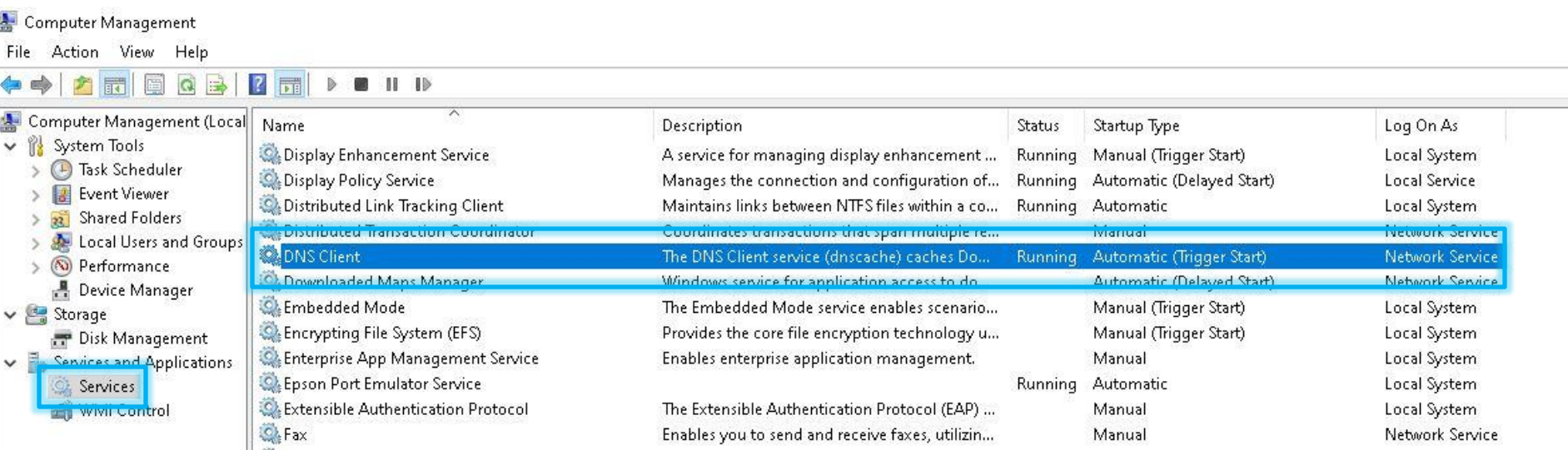
4) Network Adapter (right click > properties) select "Power Management" (uncheck "Allow the computer to turn off this device to save power" this device to save power"



5) Universal Serial Bus controllers (right click > properties) select "Power Management" (uncheck "Allow the computer to turn off this device to save power" to all devices listed



6) Double click each service to configure the following each service to Automatically start "DNS Client", "Function Discovery Resource Publication", "SSDP Discovery" & "UPnP Device Host"





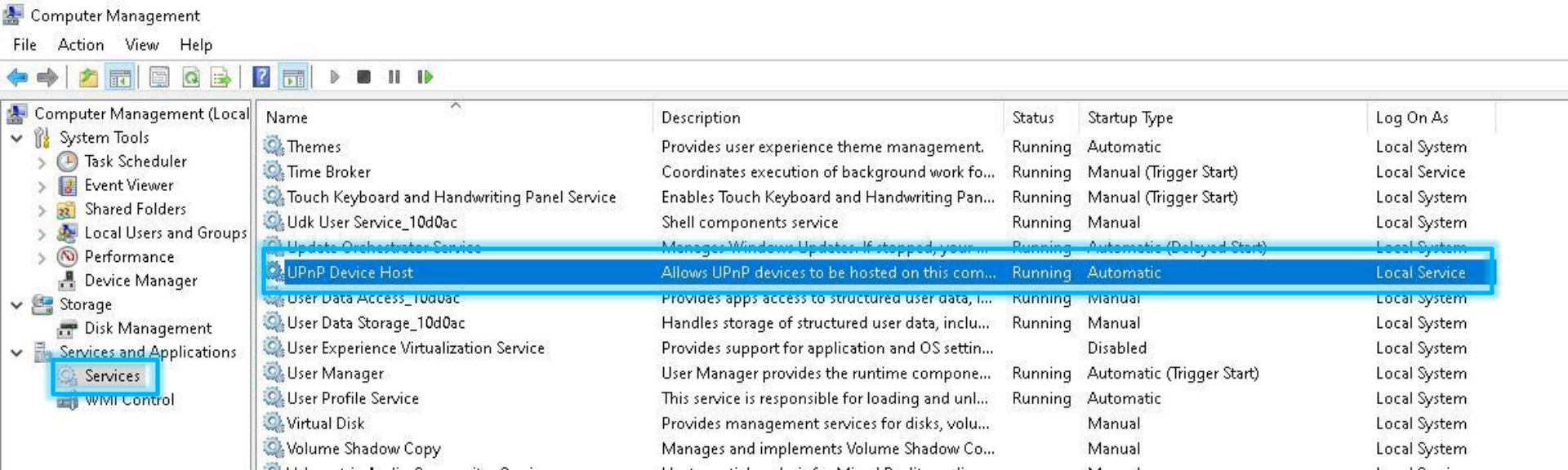
- Computer Management (Local)
- System Tools
 - Task Scheduler
 - Event Viewer
 - Shared Folders
 - Local Users and Groups
 - Performance
 - Device Manager
- Storage
 - Disk Management
- Services and Applications
 - Services**
 - WMI Control

Name	Description	Status	Startup Type	Log On As
Display Enhancement Service	A service for managing display enhancement ...	Running	Manual (Trigger Start)	Local System
Display Policy Service	Manages the connection and configuration of...	Running	Automatic (Delayed Start)	Local Service
Distributed Link Tracking Client	Maintains links between NTFS files within a co...	Running	Automatic	Local System
Distributed Transaction Coordinator	Coordinates transactions that span multiple re...		Manual	Network Service
DNS Client	The DNS Client service (dnscache) caches Do...	Running	Automatic (Trigger Start)	Network Service
Downloaded Maps Manager	Windows service for application access to do...		Automatic (Delayed Start)	Network Service
Embedded Mode	The Embedded Mode service enables scenario...		Manual (Trigger Start)	Local System
Encrypting File System (EFS)	Provides the core file encryption technology u...		Manual (Trigger Start)	Local System
Enterprise App Management Service	Enables enterprise application management.		Manual	Local System
Epson Port Emulator Service		Running	Automatic	Local System
Extensible Authentication Protocol (EAP) ...	The Extensible Authentication Protocol (EAP) ...		Manual	Local System
Fax	Enables you to send and receive faxes, utilizin...		Manual	Network Service
File History Service	Protects user files from accidental loss by cop...		Manual (Trigger Start)	Local System
FileSyncHelper	Helper service for OneDrive		Manual (Trigger Start)	Local System
Function Discovery Provider Host	The FDPHOST service hosts the Function Disc...	Running	Manual	Local Service
Function Discovery Resource Publication	Publishes this computer and resources attach...	Running	Automatic (Trigger Start)	Local Service
Game DVR and Broadcast User Service_10d0ac	This user service is used for Game Recordings ...		Manual	Local System
Geolocation Service	This service monitors the current location of t...	Running	Manual (Trigger Start)	Local System
GraphicsPerfSvc	Graphics performance monitor service		Manual (Trigger Start)	Local System

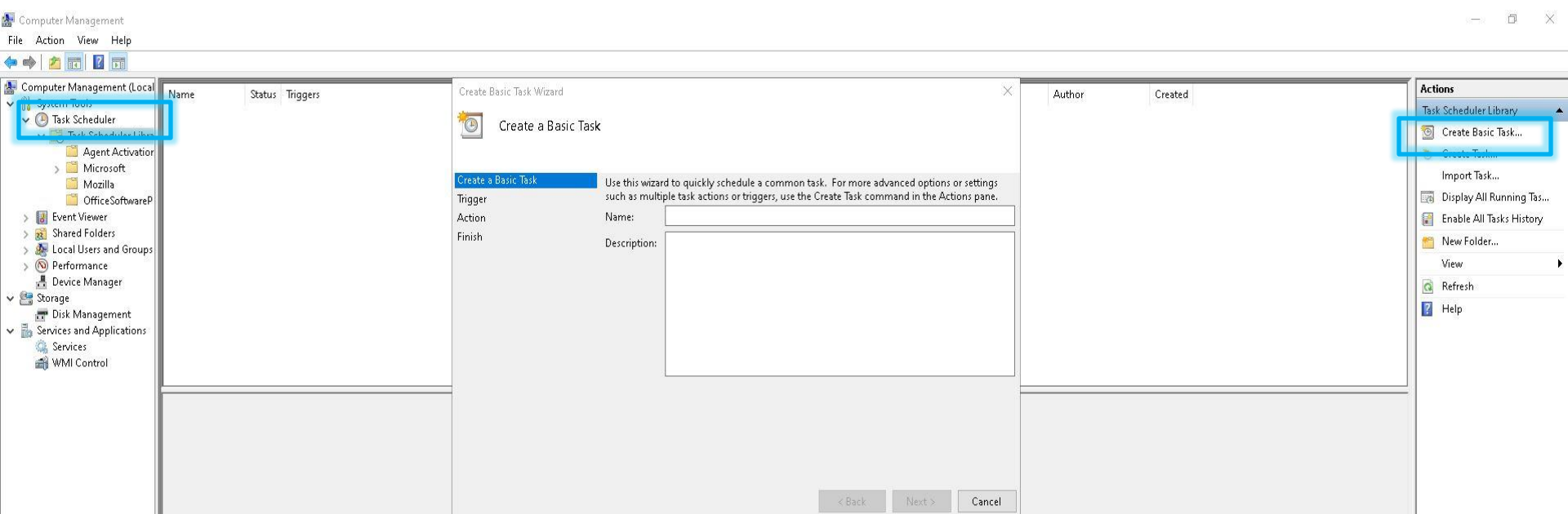


- Computer Management (Local)
- System Tools
 - Task Scheduler
 - Event Viewer
 - Shared Folders
 - Local Users and Groups
 - Performance
 - Device Manager
- Storage
 - Disk Management
- Services and Applications
 - Services**
 - WMI Control

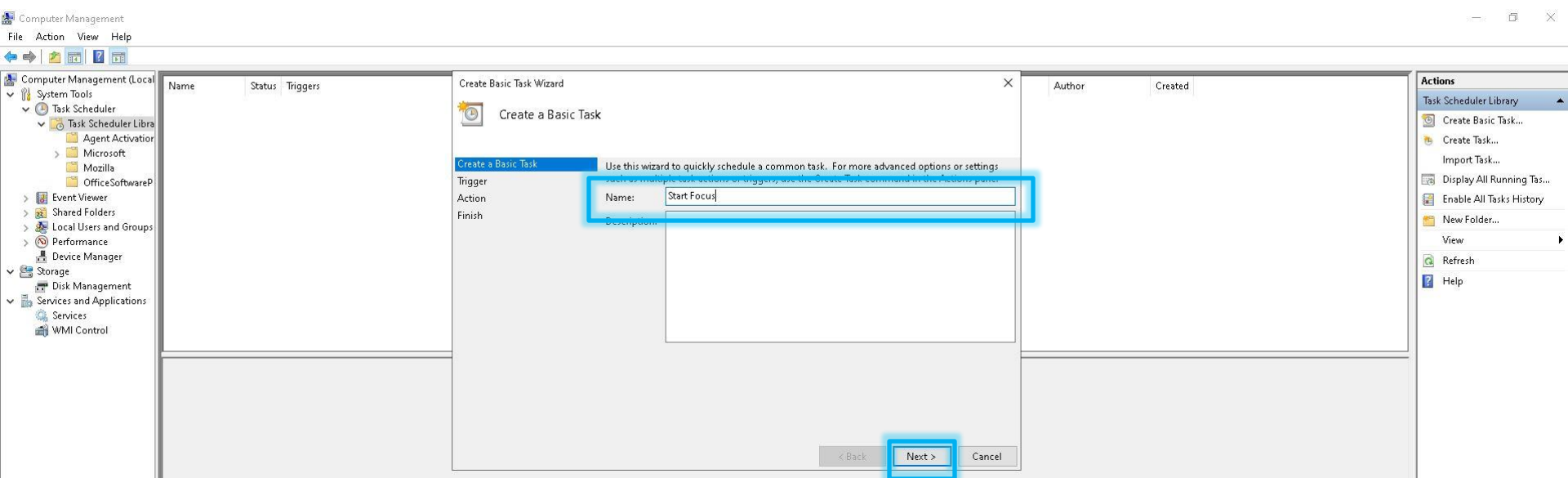
Name	Description	Status	Startup Type	Log On As
Shell Hardware Detection	Provides notifications for AutoPlay hardware e...	Running	Automatic	Local System
Smart Card	Manages access to smart cards read by this co...		Manual (Trigger Start)	Local Service
Smart Card Device Enumeration Service	Creates software device nodes for all smart car...		Manual (Trigger Start)	Local System
Smart Card Removal Policy	Allows the system to be configured to lock th...		Manual	Local System
SNMP Trap	Receives trap messages generated by local or r...		Manual	Local Service
Software Protection	Enables the download, installation and enforc...		Automatic (Delayed Start, Trigger Start)	Network Service
Spatial Data Service	This service is used for Spatial Perception scen...		Manual	Local Service
Spot Verifier	Verifies potential file system corruptions.		Manual (Trigger Start)	Local System
SSDP Discovery	Discovers networked devices and services that...	Running	Automatic	Local Service
State Repository Service	Provides required infrastructure support for th...	Running	Manual	Local System
Still Image Acquisition Events	Launches applications associated with still im...		Manual	Local System
Storage Service	Provides enabling services for storage settings...	Running	Automatic (Delayed Start, Trigger Start)	Local System
Storage Tiers Management	Optimizes the placement of data in storage tie...		Manual	Local System
Sync Host 10d0ac	This service synchronizes mail, contacts, calen...	Running	Automatic (Delayed Start)	Local System



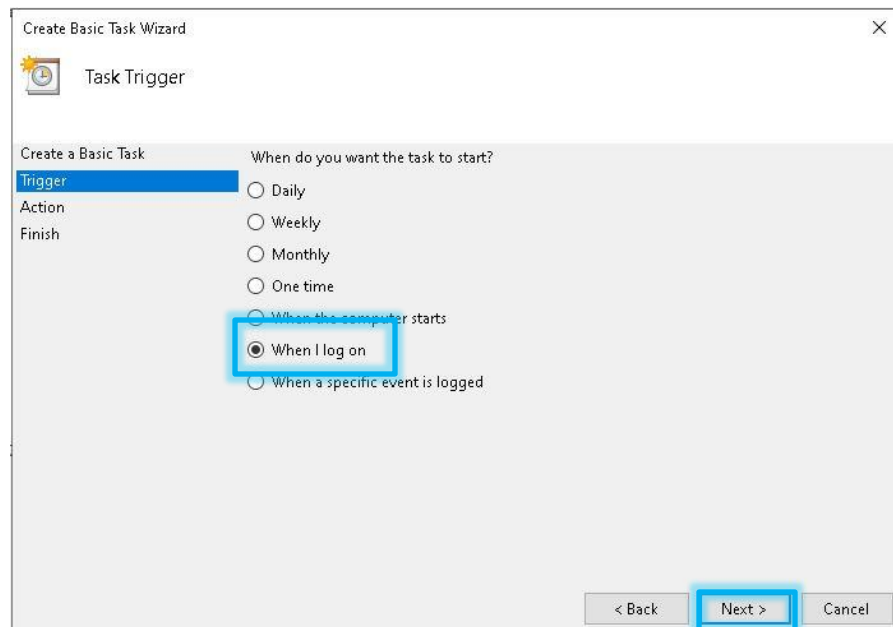
7) Select “Task Scheduler Library” > choose “Create a Basic Task” > select “Next”



8) Type the name for the basic task “Start Focus” > select “Next”



9) Choose radio button “When I log on” > “Next”



10) Choose radio button “Start a program” > “Next”

Create Basic Task Wizard

Action

Create a Basic Task

Trigger

Action

Finish

What action do you want the task to perform?

☒ Start a program

☐ Send an e-mail (deprecated)

☐ Display a message (deprecated)

< Back

Next >

Cancel

11b) ONLY for Backup PC! enter the program/script as shown in example below > “Next”

Create Basic Task Wizard

Start a Program

Create a Basic Task

Trigger

Action

Finish

Program/script:

C:\Focus\Focus.exe /bc:\Focus /lm /analysis

Browse...

Add arguments (optional):

Start in (optional):

< Back

Next >

Cancel

11a) ONLY for Focus PC! enter the program/script as shown in example below > “Next”

Create Basic Task Wizard

Start a Program

Create a Basic Task

Trigger

Action

Finish

Program/script:

C:\Focus\Focus.exe /pci\Focus /lm /analysis

Browse...

Add arguments (optional):

Start in (optional):

< Back

Next >

Cancel

11c) ONLY for ST3/4/5/6/etc.! enter the program/script as shown in example below > “Next”

Create Basic Task Wizard

Start a Program

Create a Basic Task

Trigger

Action

Finish

Program/script:

C:\Focus /lm /analysis

Browse...

Add arguments (optional):

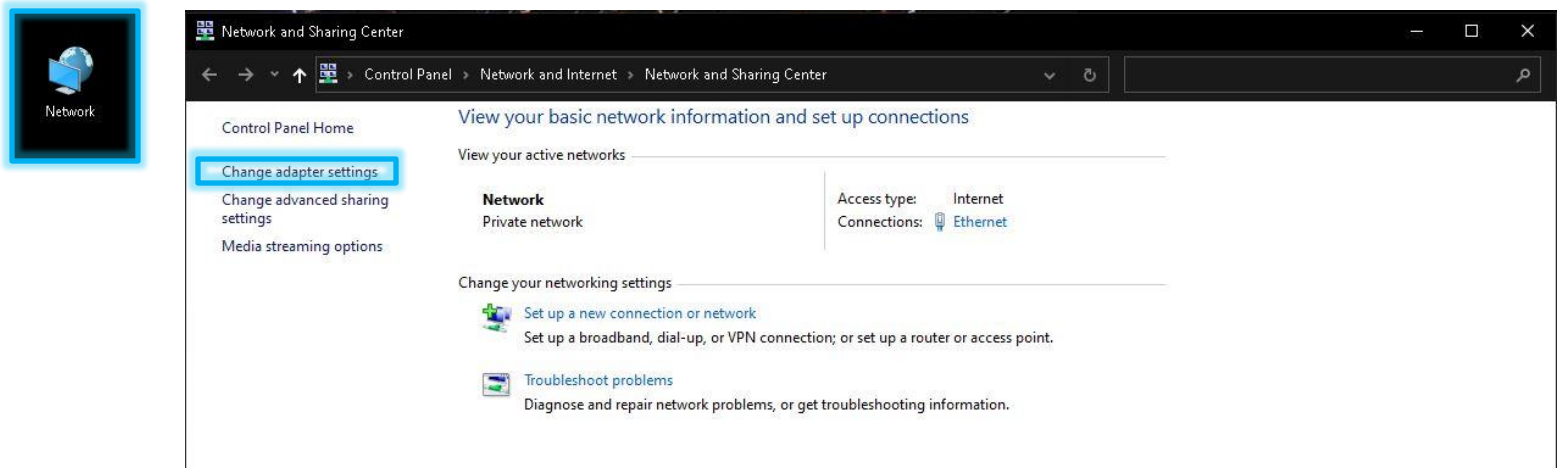
Start in (optional):

< Back

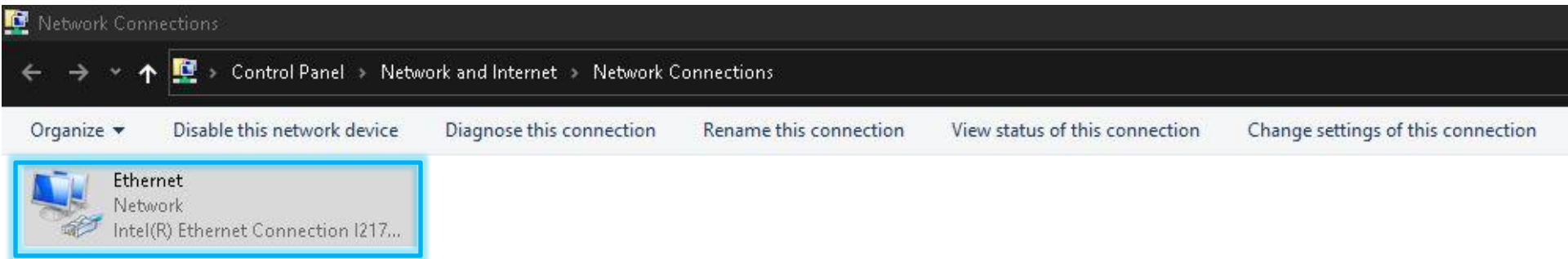
Next >

Cancel

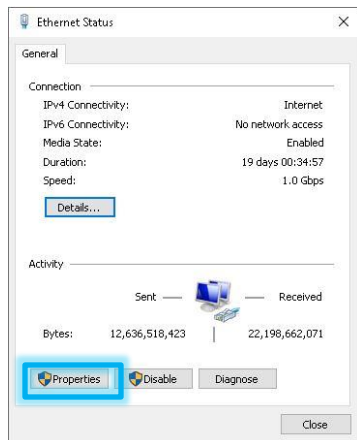
12) Right click "Network" > Properties > select "Change adapter settings"



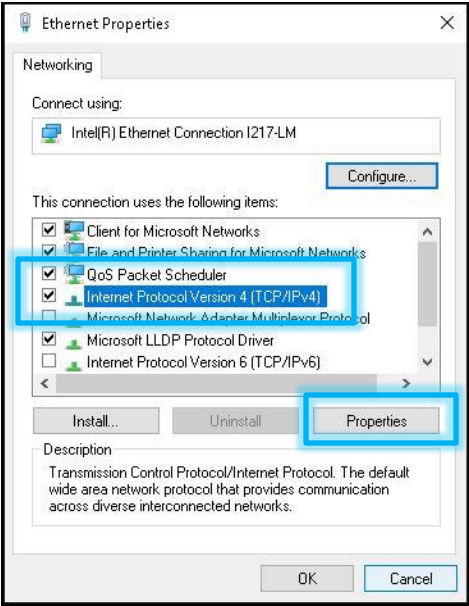
13) Double click "Ethernet Network icon"



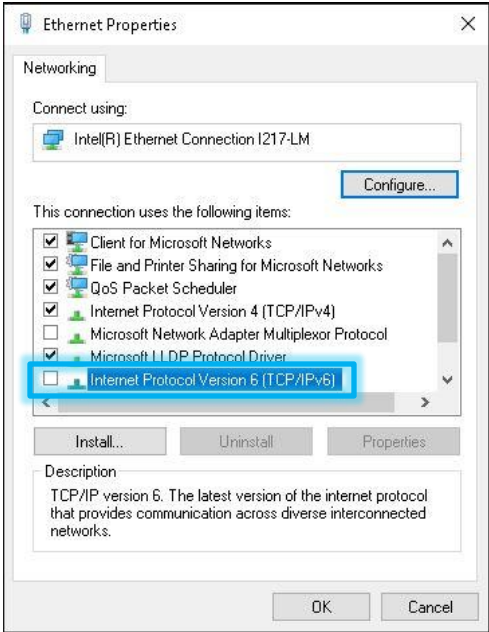
14) Choose "Properties"



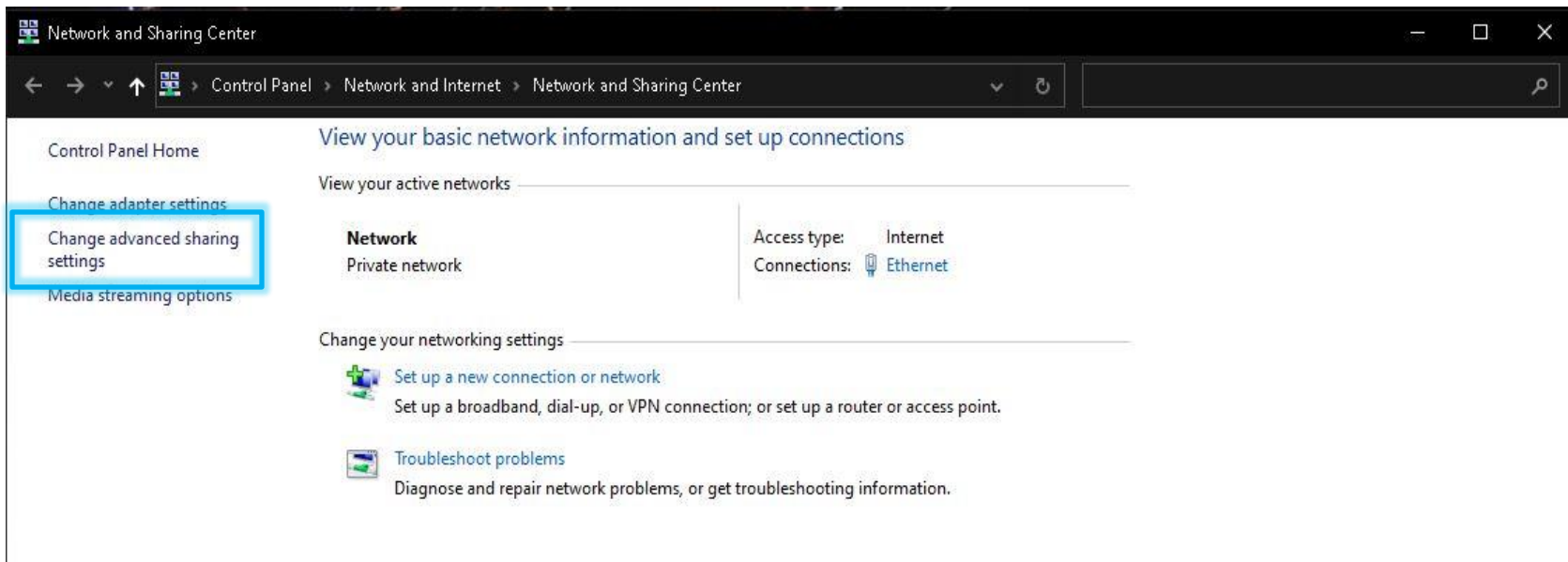
15) Highlight “Internet Protocol Version 4 (TCP/IPv4)” > choose “Properties”



16) Uncheck “Internet Protocol Version 6 (TCP/IPv6)”



17) select "Change advanced sharing settings"



18) Enable network discovery by selecting the following options as shown below.

Change sharing options for different network profiles

Windows creates a separate network profile for each network you use. You can choose specific options for each profile.

Private (current profile) ^

Network discovery ^

When network discovery is on, this computer can see other network computers and devices and is visible to other network computers.

- ☒ Turn on network discovery
- ☒ Turn on automatic setup of network connected devices.
- ☐ Turn off network discovery

File and printer sharing ^

When file and printer sharing is on, files and printers that you have shared from this computer can be accessed by people on the network.

- ☒ Turn on file and printer sharing
- ☐ Turn off file and printer sharing

Guest or Public v

All Networks v

Windows creates a separate network profile for each network you use. You can choose specific options for each profile.

Private (current profile) v

Guest or Public ^

Network discovery ^

When network discovery is on, this computer can see other network computers and devices and is visible to other network computers.

- ☒ Turn on network discovery
- ☐ Turn off network discovery

File and printer sharing ^

When file and printer sharing is on, files and printers that you have shared from this computer can be accessed by people on the network.

- ☒ Turn on file and printer sharing
- ☐ Turn off file and printer sharing

All Networks v

Change sharing options for different network profiles

Windows creates a separate network profile for each network you use. You can choose specific options for each profile.

Private (current profile) v

Guest or Public v

All Networks ^

Public folder sharing ^

When Public folder sharing is on, people on the network, including homegroup members, can access files in the Public folders.

- ☒ Turn on sharing so anyone with network access can read and write files in the Public folders
- ☐ Turn on Public folder sharing (people logged on to this computer can still access these folders)

Media streaming ^

When media streaming is on, people and devices on the network can access pictures, music, and videos on this computer. This computer can also find media on the network.

[Choose media streaming options...](#)

File sharing connections ^

Windows uses 128-bit encryption to help protect file sharing connections. Some devices don't support 128-bit encryption and must use 40- or 56-bit encryption.

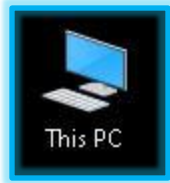
- ☒ Use 128-bit encryption to help protect file sharing connections (recommended)
- ☐ Enable file sharing for devices that use 40- or 56-bit encryption

Password protected sharing ^

When password protected sharing is on, only people who have a user account and password on this computer can access shared files, printers attached to this computer, and the Public folders. To give other people access, you must turn off password protected sharing.

- ☒ Turn on password protected sharing
- ☐ Turn off password protected sharing

19) Right click "This PC" > choose "Properties" > select "Advanced system settings"

A screenshot of the Windows Settings application, specifically the 'About' page. The left sidebar shows various settings categories, with 'About' selected at the bottom. The main content area is titled 'About' and includes a search bar, a 'Find a setting' input, and sections for 'Device specifications' and 'Windows specifications'. The 'Advanced system settings' link under the 'System protection' section is highlighted with a red rectangle. The 'Copy' button under 'Device specifications' is also visible.

Settings

Home

Find a setting

System

- Display
- Sound
- Notifications & actions
- Focus assist
- Power & sleep
- Storage
- Tablet
- Multitasking
- Projecting to this PC
- Shared experiences
- Clipboard
- Remote Desktop
- About

About

Your PC is monitored and protected.

[See details in Windows Security](#)

Device specifications

Device name	CW
Processor	Intel(R) Core(TM) i5-4690 CPU @ 3.50GHz 3.50 GHz
Installed RAM	8.00 GB
Device ID	1FBE0A28-934E-48E8-BF48-ECA39B4D6B9E
Product ID	00330-50000-00000-AAOEM
System type	64-bit operating system, x64-based processor
Pen and touch	No pen or touch input is available for this display

Copy

Rename this PC

Windows specifications

Edition	Windows 10 Pro
Version	21H2
Installed on	7/19/2021
OS build	19044.1826
Experience	Windows Feature Experience Pack 120.2212.4180.0

Copy

[Change product key or upgrade your edition of Windows](#)

[Read the Microsoft Services Agreement that applies to our services](#)

[Read the Microsoft Software License Terms](#)

This page has a few new settings

Some settings from Control Panel have moved here, and you can copy your PC info so it's easier to share.

Related settings

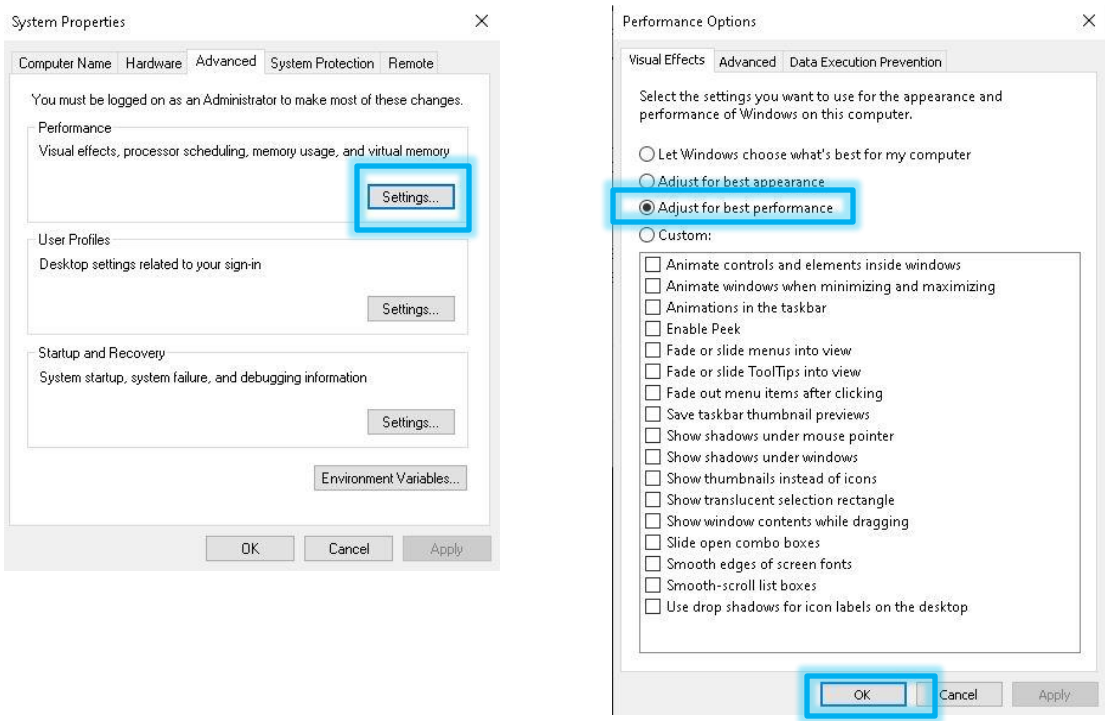
- [BitLocker settings](#)
- [Device Manager](#)
- [Remote desktop](#)
- [System protection](#)
- [Advanced system settings](#)
- [Rename this PC \(advanced\)](#)

Help from the web

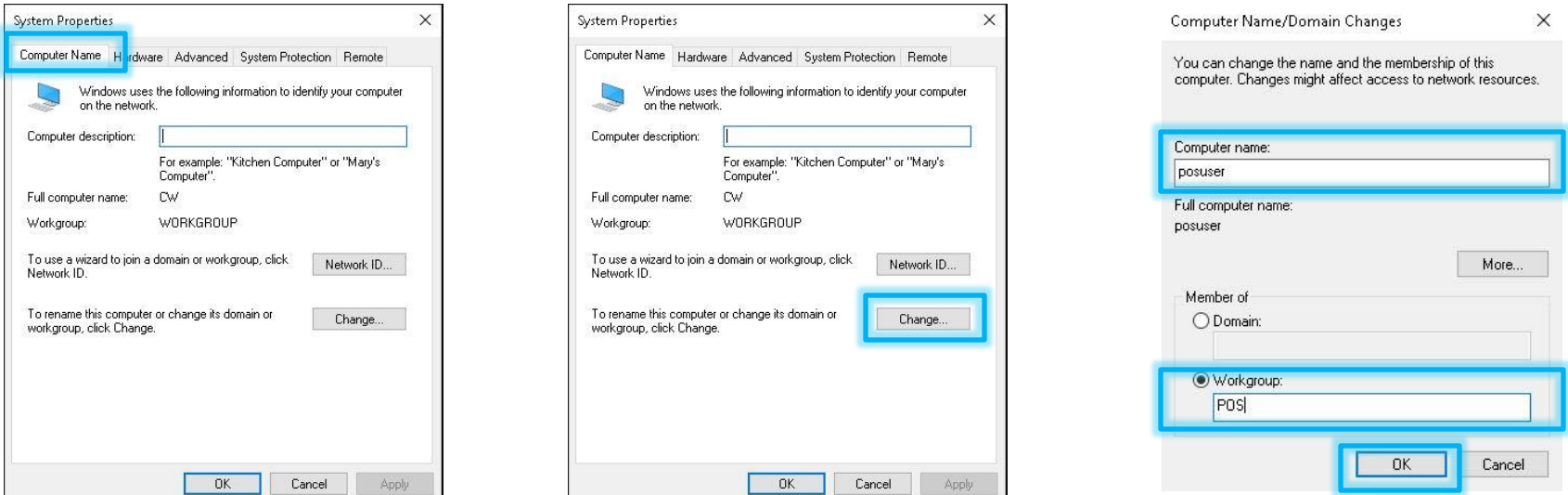
- [Finding out how many cores my processor has](#)
- [Checking multiple Languages support](#)

[Get help](#)

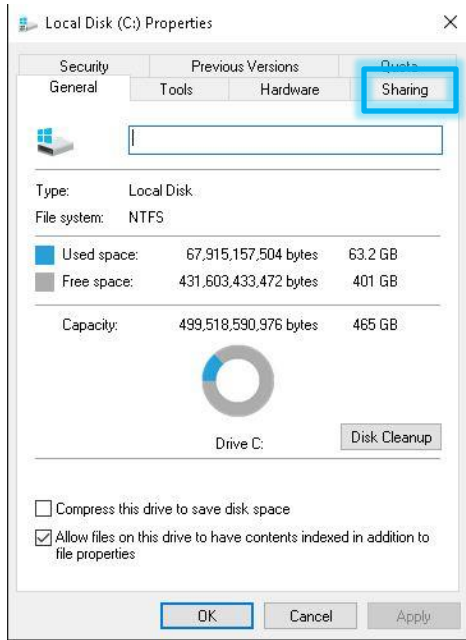
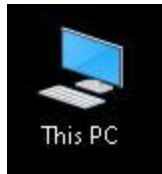
20) Select “Settings” under Performance > select “Adjust for best performance” in Visual Effects Tab > select “OK”



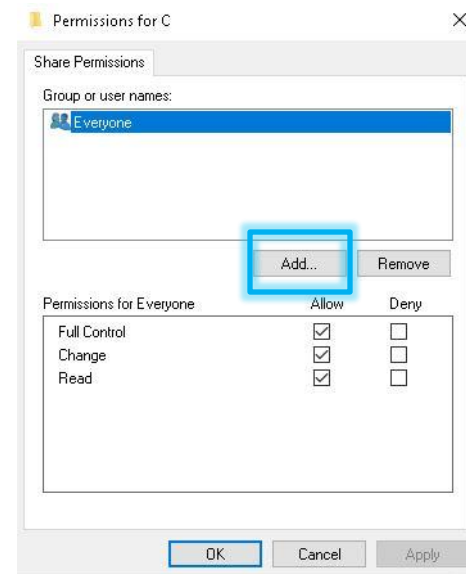
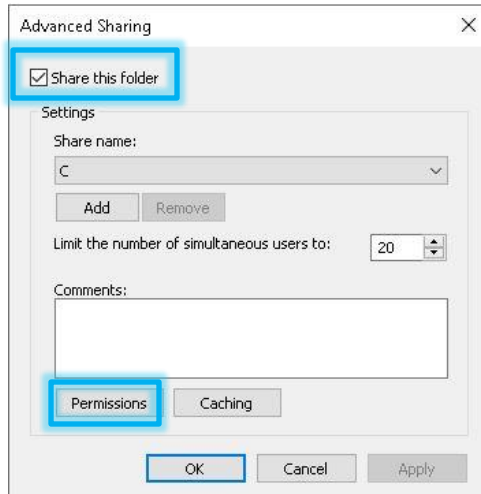
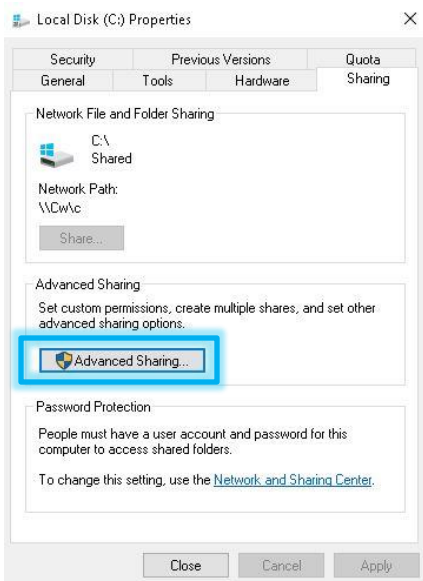
21) Choose the “Computer Name” Tab > select “Change” > type “posuser” Computer name > type “POS” Workgroup



21) Double click “This PC” > right click C:\ drive > select “Properties” > choose “Sharing” tab



22) Select “Advanced Sharing...” > choose “Permissions” > select “Add”



23) Choose “Find Now” > select “posuser” > select “OK” > select the check box “Full Control” > select “OK”

Select Users or Groups

Select this object type:
Users, Groups, or Built-in security principals

From this location:
CW

Common Queries

Name: Starts with

Description: Starts with

☐ Disabled accounts

☐ Non expiring password

Days since last login:

Find Now

OK

Search results:

Name	In Folder
NETWORK SERVICE	
OWNER RIGHTS	
Performance Log Users	CW
Performance Monitor Users	CW
posuser	CW
Power Users	CW
Remote Desktop Users	CW
REMOTE INTERACTIVE LOGON	
Remote Management Users	CW
Replicator	CW

Permissions for C

Share Permissions

Group or user names:

Everyone

posuser (CW\posuser)

Add... Remove

Permissions for posuser

	Allow	Deny
Full Control	<input checked="" type="checkbox"/>	<input type="checkbox"/>
Change	<input checked="" type="checkbox"/>	<input type="checkbox"/>
Read	<input checked="" type="checkbox"/>	<input type="checkbox"/>

OK **Cancel** **Apply**